



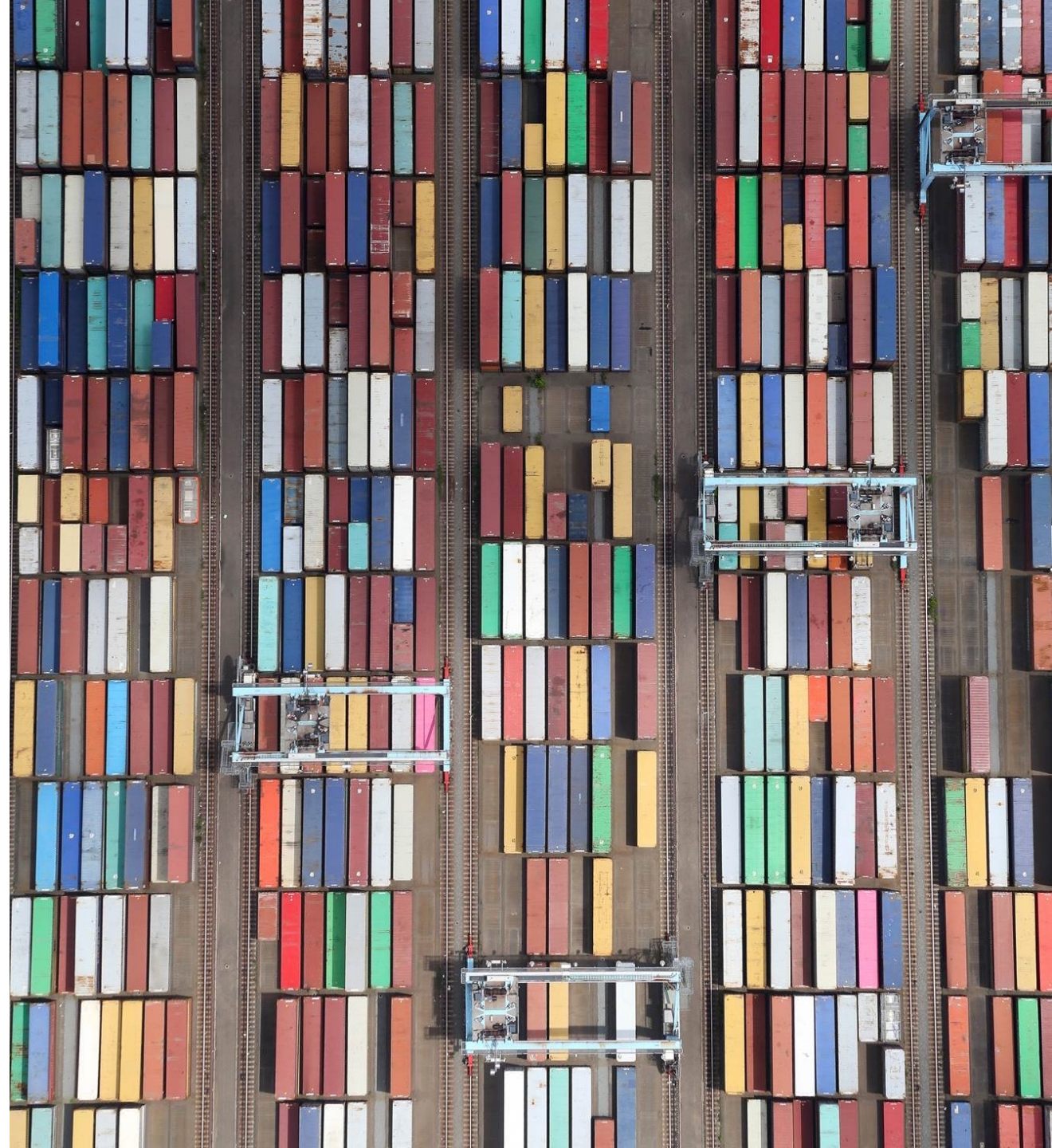
The Port of Virginia VEDP Advisory Committee on International Trade

December 7, 2021



Agenda

- **Economic Impact**
- **Strong Volumes**
- **Port Modernization**
- **Service Metrics**
- **Continued Investment**



Port Economic Impact - FY18 results



22.1 Million

Tons of cargo moved



\$92.1 Billion

In spending



\$39.3 Billion

In Virginia GSP



397,094

Jobs in Virginia



\$23.0 Billion

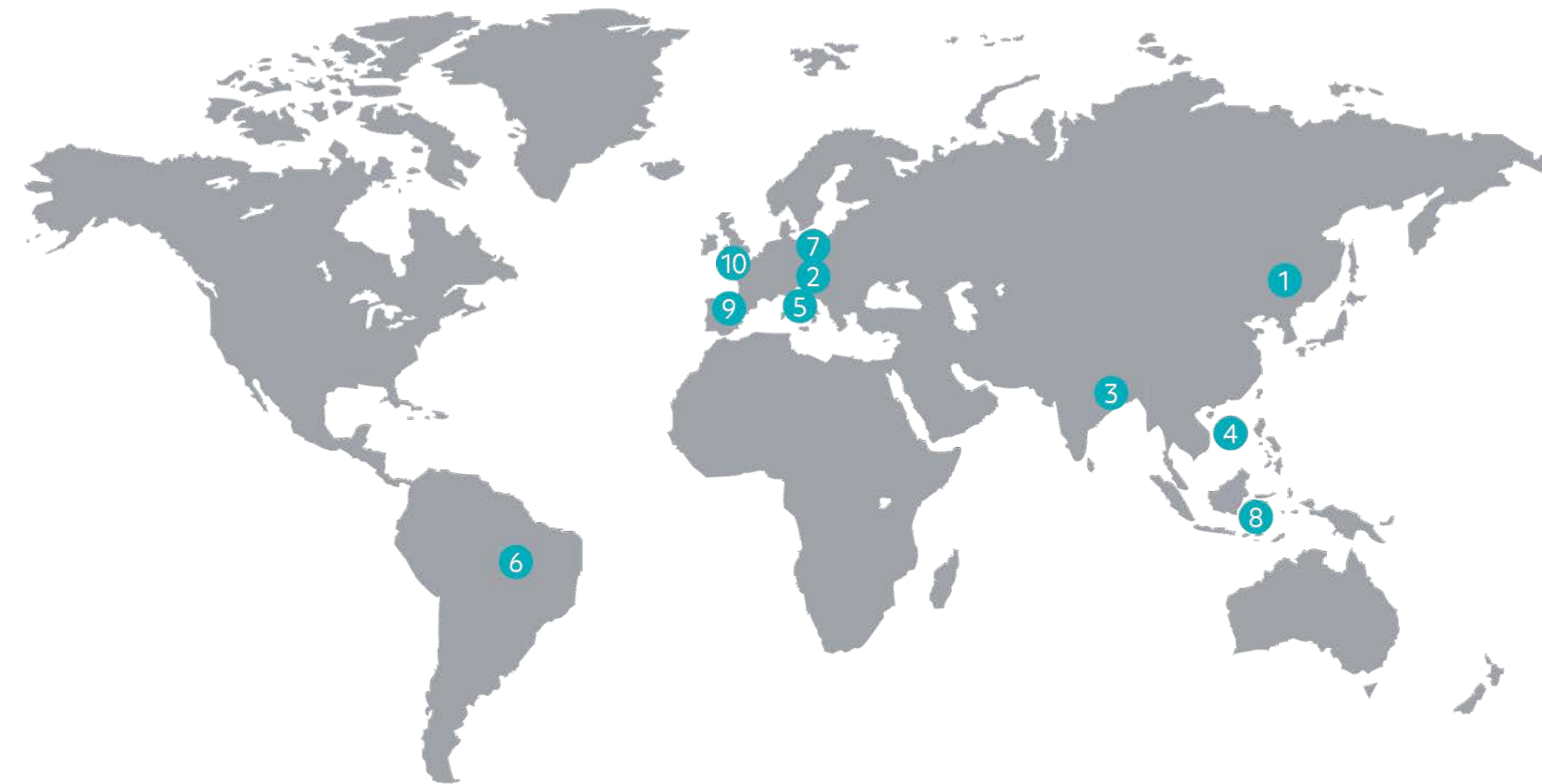
In Virginia labor income



\$2.1 Billion

In state and local taxes
and fees

Top Import Countries



● TOP IMPORT COUNTRIES

- | | |
|----|-------------|
| 1 | China |
| 2 | Germany |
| 3 | India |
| 4 | Vietnam |
| 5 | Italy |
| 6 | Brazil |
| 7 | Netherlands |
| 8 | Indonesia |
| 9 | Spain |
| 10 | Belgium |

Top Export Countries



● TOP EXPORT COUNTRIES

- | | |
|----|-------------|
| 1 | China |
| 2 | Belgium |
| 3 | Netherlands |
| 4 | Germany |
| 5 | Indonesia |
| 6 | India |
| 7 | Japan |
| 8 | Vietnam |
| 9 | Brazil |
| 10 | Thailand |

Terminal Modernization Complete

We have unmatched capability and capacity to
handle the vessels of the future

Virginia International Gateway (VIG)

4,000' WHARF
(1,219M)
AGGREGATE LENGTH

50' (15.24M)
BERTH & CHANNEL
ACCESS

56
RMG CRANES

30
TRUCK
GATE LANES

12 STS CRANES
SUPER POST
PANAMAX

28
SEMI-AUTOMATED
STACKS

1,212
REEFER
PLUGS

19,000'
(5791M)
RAIL
TRACK



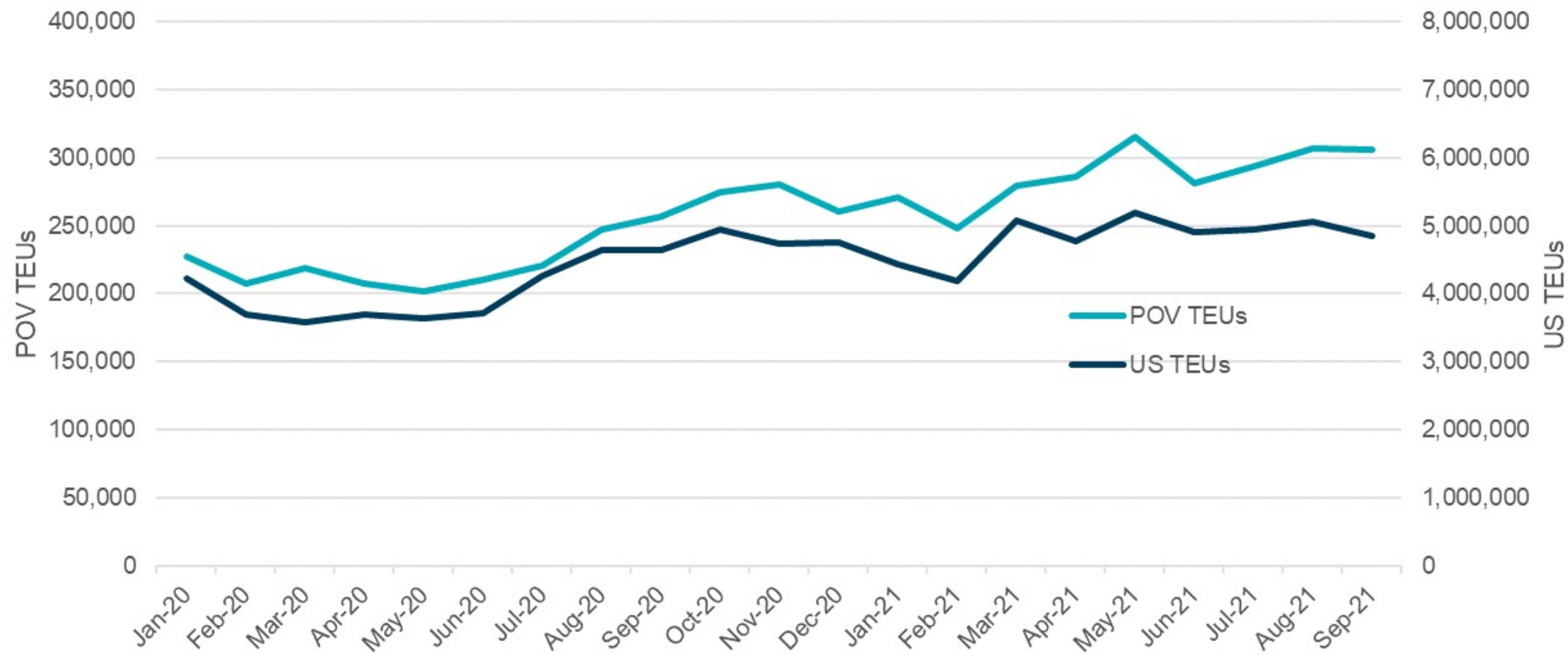
Norfolk International Terminals (NIT)



POV Jan – Oct 2021 Volumes

	Jan - Oct 2020	Jan - Oct 2021	Change	% Change
Total TEUs	2,273,145	2,906,548	633,403	27.9%
Export Loaded TEUs	768,982	876,919	107,937	14.0%
Export Empty TEUs	416,197	627,343	211,146	50.7%
Import Loaded TEUs	1,068,544	1,380,322	311,778	29.2%
Total Rail Containers	409,059	536,910	127,851	31.3%
Front Royal Containers	23,390	26,482	3,092	13.2%
Total Barge Containers	50,899	64,043	13,144	25.8%
Richmond Containers	35,321	33,608	-1,713	-4.8%
Total Truck Containers	800,088	1,016,520	216,432	27.1%
Ship Calls	1,160	1,305	145	12.5%

US and POV Volume



Data Source: POV, AAPA Container Port Monthly Results

Market Share Comparison

USEC Ports Loaded TEUs

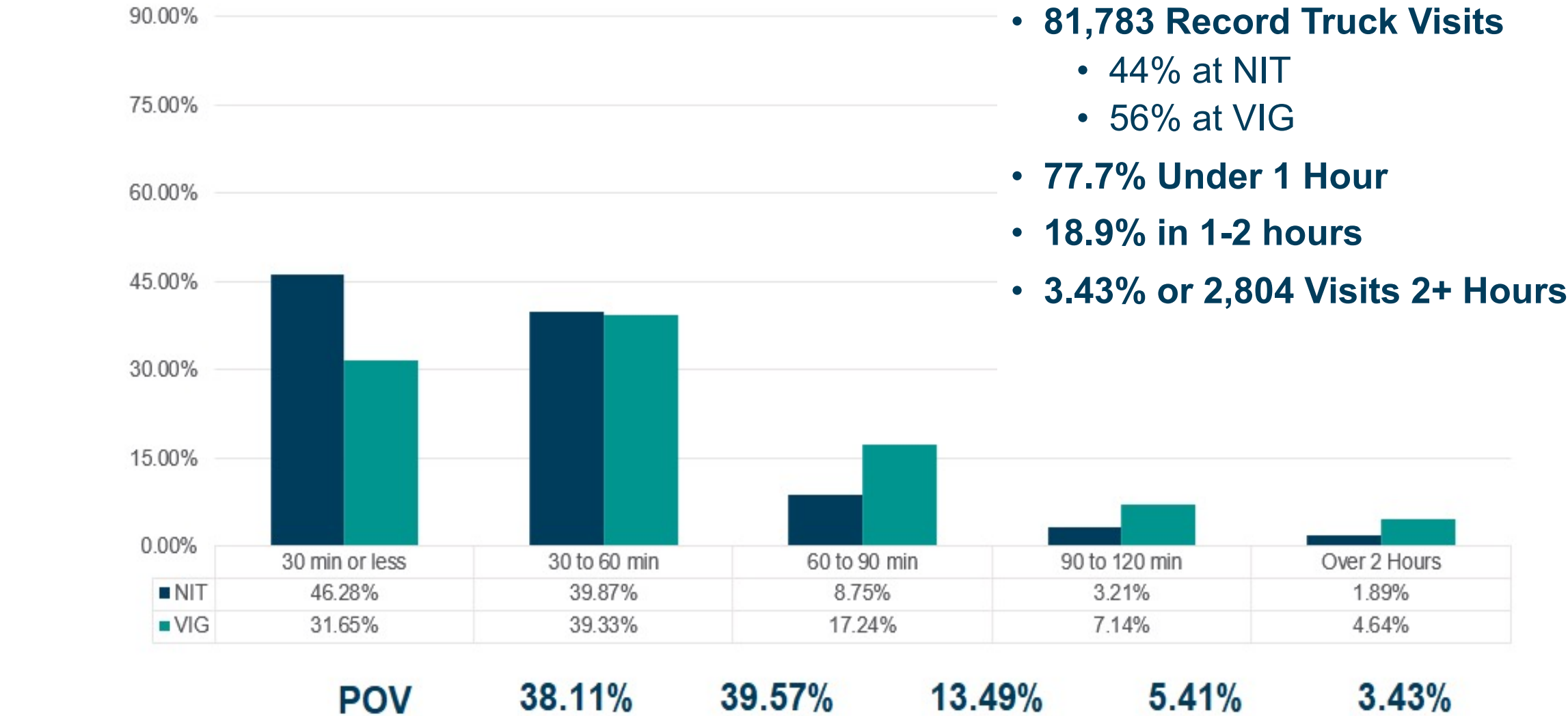
Timeframe: January - September

Source: PIERs - Loaded TEUs

Total Loaded TEUs	CY19	CY20	CY21	CY20/CY19 YOY%	CY21/CY19 YOY%	CY21/CY20 YOY%
TOTAL EAST COAST PORTS	12,733,916	11,994,618	14,100,833	(5.8%)	10.7%	17.6%
NEW YORK/ NEW JERSEY	3,914,619	3,736,621	4,405,649	(4.5%)	12.5%	17.9%
SAVANNAH	2,740,864	2,644,611	3,092,003	(3.5%)	12.8%	16.9%
PORT OF VIRGINIA	1,670,301	1,514,499	1,920,212	(9.3%)	15.0%	26.8%
CHARLESTON	1,409,716	1,298,116	1,538,645	(7.9%)	9.1%	18.5%
BALTIMORE	555,563	521,154	541,739	(6.2%)	(2.5%)	3.9%
WILMINGTON NC	175,057	173,496	188,496	(0.9%)	7.7%	8.6%

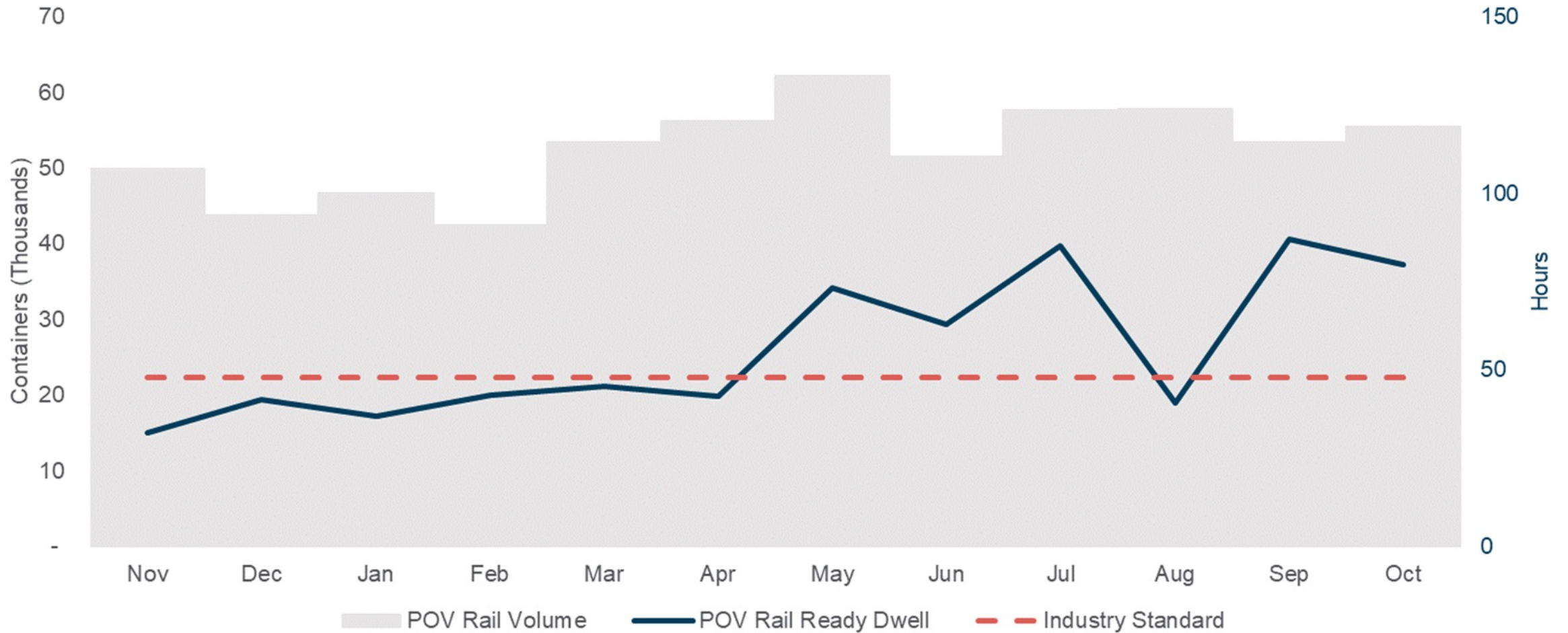
*Total East Coast Ports includes: NY/NJ, Philadelphia, Wilmington, DE, Baltimore, Port of Virginia, Wilmington, NC, Charleston, Savannah, Jacksonville, Port Everglades and Miami

Traditional Turn Time – Oct 2021



- **81,783 Record Truck Visits**
 - 44% at NIT
 - 56% at VIG
- **77.7% Under 1 Hour**
- **18.9% in 1-2 hours**
- **3.43% or 2,804 Visits 2+ Hours**

POV Rail Volume



Continued Investments

STS Cranes: 400,000 Lift Capacity Increase

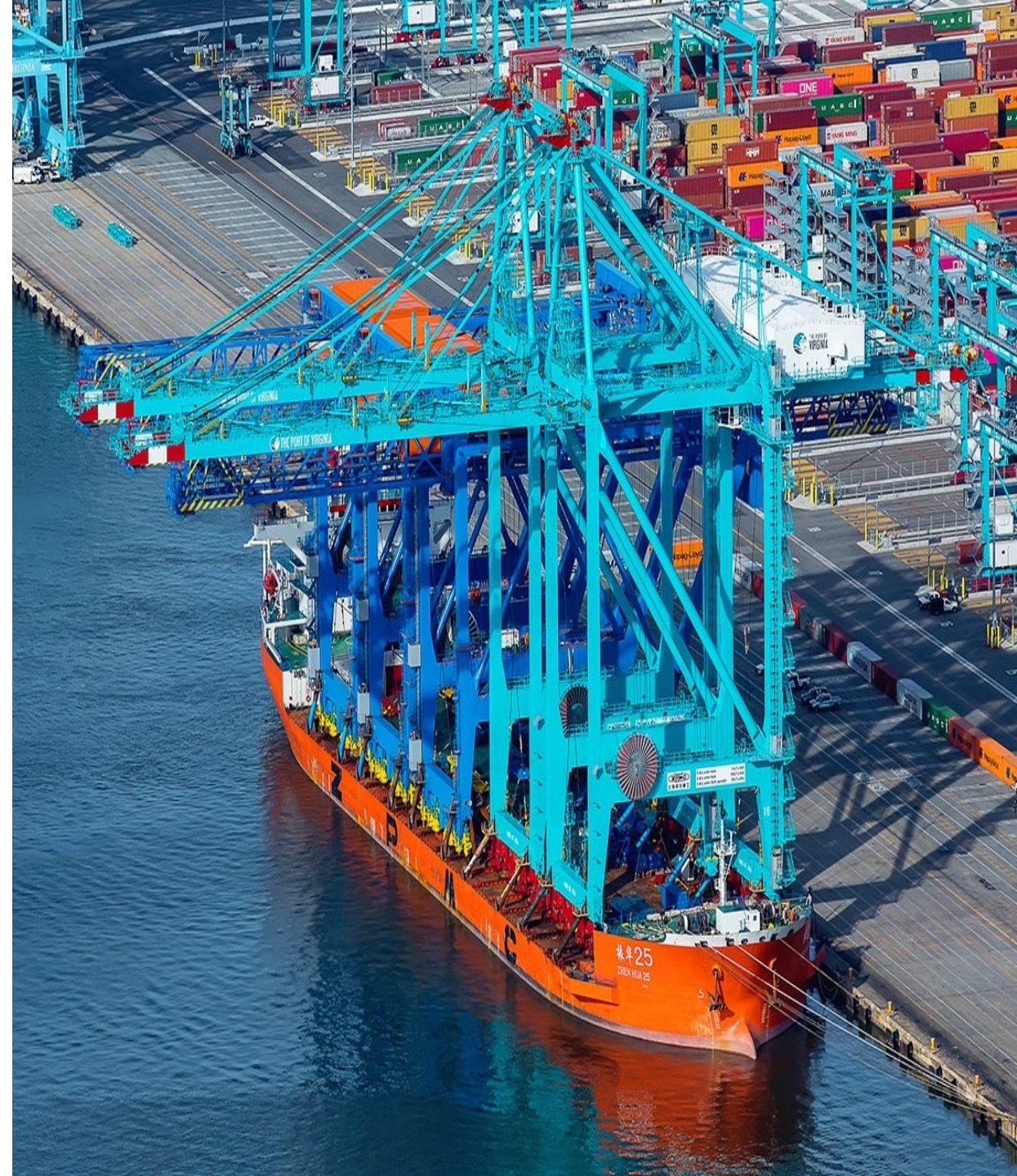
- **2021:** Two STS cranes added
- **Q1 2022:** Two STS cranes added

Shuttle Trucks: Supports further 600,000 crane lift capacity

- **2021:** Twenty Shuttle Trucks delivered
- **Q2 2022:** Eighteen Shuttle Trucks to be delivered

Chassis: 6,100 Additional Chassis

- **Q3 2021 thru Q2 2022:** 3,100 Chassis to be delivered
- **Q2 2022 thru Q4 2022:** 3,000 Chassis to be delivered



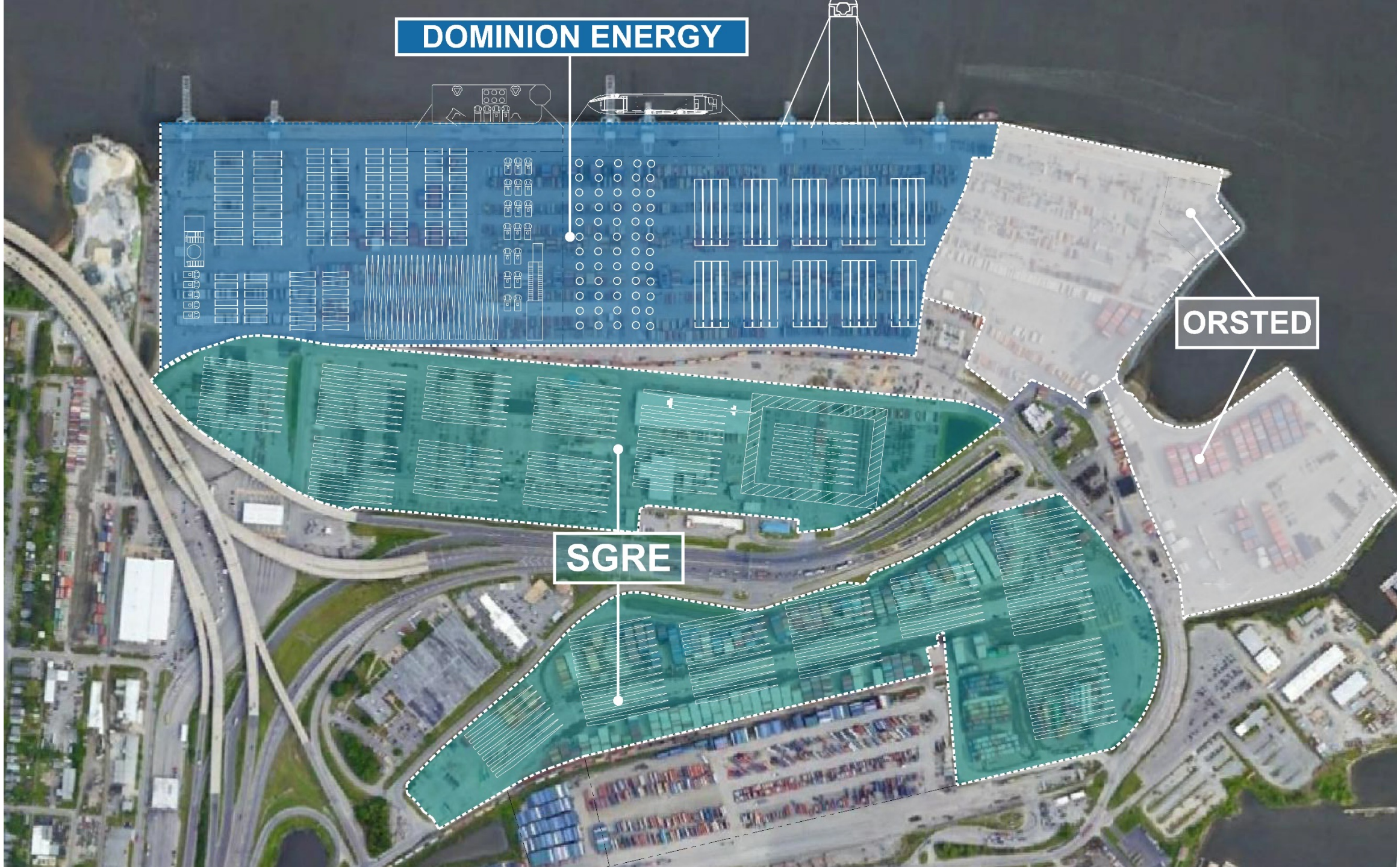
NIT Central Rail Yard



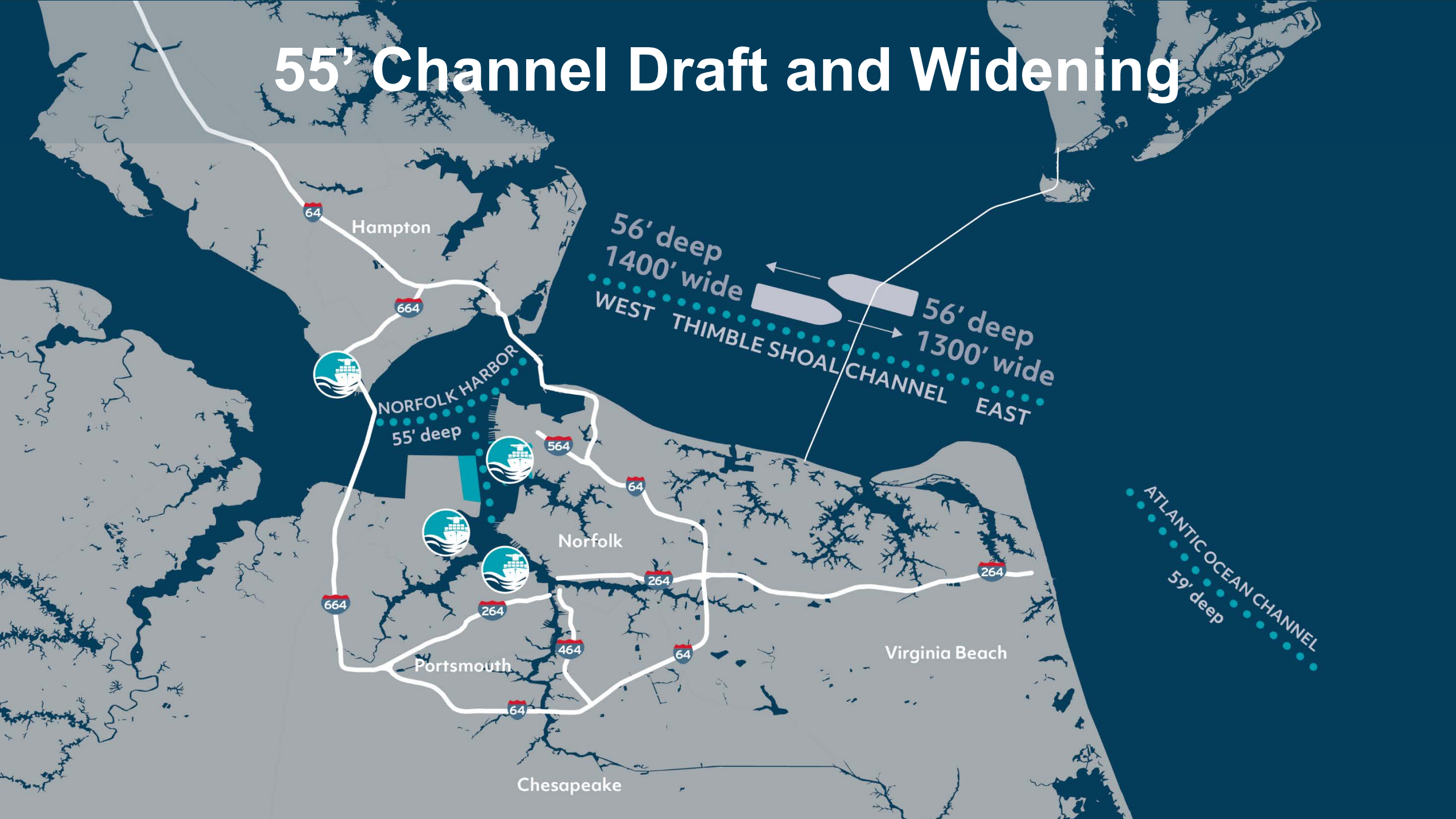
DOMINION ENERGY

ORSTED

SGRE



55' Channel Draft and Widening





Thank You